

Unified Situational Awareness and Real-Time Security Management

Centralized Attack Mitigation System Management

Deploying and managing globally distributed application and network security solutions can be complicated. The operating costs of multiple security devices must be minimized, changes must be deployed consistently and the security and compliance of the infrastructure must be measured. You need tools to enable early detection of security threats and then quickly alert you of issues that need attention. The key to minimizing impact is to remove threats and restore operations quickly.

APSolute Vision is a specifically tailored unified management and monitoring application and network security devices. It supports all element management aspects: initial device setup, ongoing maintenance, automated device configuration backup, and more.

It provides central storage of vital device information, allowing IT managers to easily find hardware platform details, software versions, installed licenses, etc. Thus eliminating manual tracking of critical device information, and reducing errors.

Real-time Threats Identification, Prioritization, and Response

Radware APSolute Vision provides a unified situational awareness solution for security and compliance administrators to centrally manage distributed Radware Attack Mitigation System (AMS) installations and monitor the security of data center applications.

To ensure alignment of protection services amongst multiple AMS installations, APSolute Vision supports sharing discovered signatures between multiple AMS solutions. Ensuring complete coverage against emerging threats on the data center.

APSolute Vision provides real-time monitoring and alerts on policy violations, non-standard processes, rogue applications, potential financial fraud, identity theft and cyber-attacks. Data from multiple devices is collected and evaluated in a consolidated view of dashboards and reports.

Alerts are managed from the moment they occur (identification stage), through ticket opening, analysis, resolution, verification stages and up to the point where the problem is resolved and summarized. This ensures complete alignment to enterprise's and SOC business processes.

APSolute Vision's reports - viewable from a secure portal or exported in HTML, PDF, CSV, etc - provide extensive yet simple drilldown capabilities that allow users to easily drill into information to speed incident identification and provide root cause analysis, improving collaboration between NOC and SOC teams, and accelerating the resolution of security incidents.

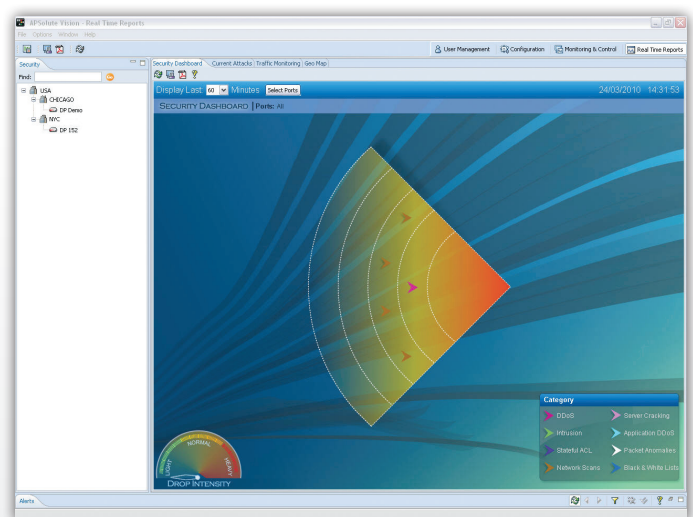


Figure 1 - The real time sonar view allows you to see current attacks in your network. High risk attacks are located closer to the sonar transmitter. The side meter indicates the drop intensity of attack traffic.

Per User Dashboards and Reports Customization

APSSolute Vision allows users to fully customize real-time security dashboards and historical security reports. This ensures users can get a full network security view at a glance, with the exact information relevant to them and reduces the amount of drill downs required to reach information.

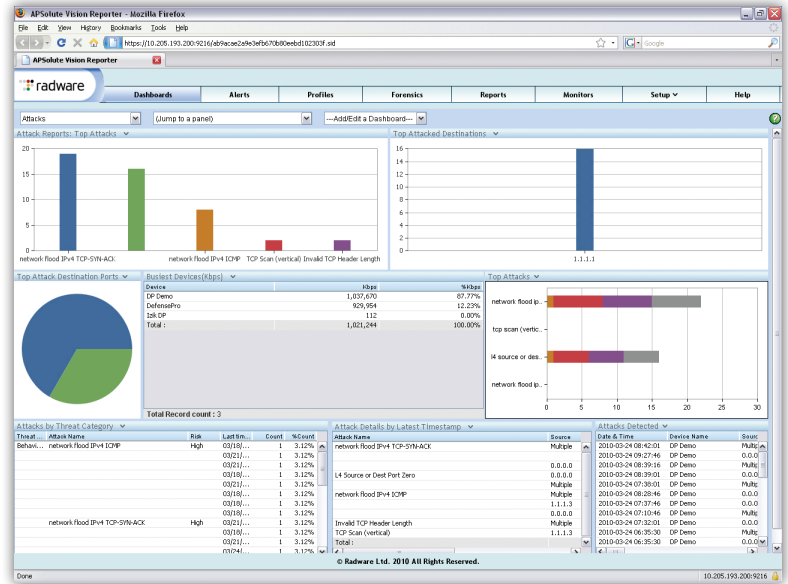


Figure 2 - The security dashboard displays multiple attack reports in a single view, customizable per user.

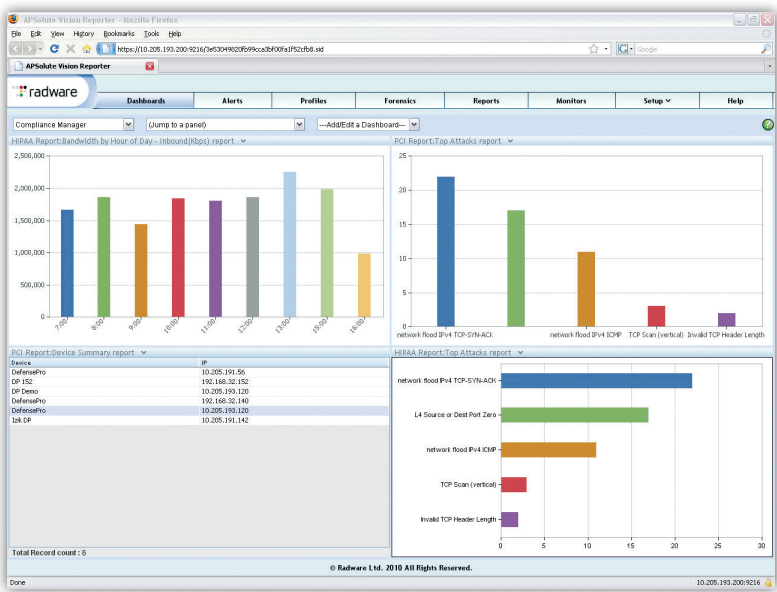


Figure 3 - Create job specific dashboards, such as a Compliance Manager dashboard containing compliancy information on different regulations.

Complete Alignment with Enterprise Compliancy Requirements and Regulations

APSSolute Vision provides complete alignment with enterprise's compliancy, regulations and business processes, providing compliance and audit professionals with a complete picture of compliance across the enterprise.

It ensures the appropriate separation of duties, collection of information, and operation auditing mandated by many regulations and information security standards (PCI-DSS, SOX, HIPAA, etc). Through enhanced role-based access and logging capabilities, APSSolute Vision ensures all actions across the application delivery and security infrastructure, are logged and only performed by the authorized personnel.

In addition, APSSolute Vision segregates statistical and performance data to support job-specific views, dashboards, analysis, and reporting. While executives may desire to view high-level summary reports, IT professionals can easily drill into more complex monitoring, reporting and forensics detail.

Tight Integration with MSSP Environments

APSSolute Vision allows managed security service providers (MSSP) to create customer specific reports and email them to their customers, thus ensuring MSSP customers gain complete visibility into the security events affecting their network.

These reports allow MSSPs to collect the information required for metering and billing purposes, and generate reports that show the service value and service cost justification.

In addition, MSSPs can directly connect to APSSolute Vision's data base, extracting the data directly into the MSSP's own security event management systems, simplifying the integration into the MSSPs reporting models and information schemas.

Supported Device Versions

| Product | Version |
|------------|-----------------------|
| DefensePro | 5.x, 6.0x and 7.20.0x |

APSSolute Vision Hardware Specifications

| | |
|-------------------------------|--|
| Processor | Q9400 Intel Quad 2.6Ghz |
| Memory | 8GB |
| Copper Gigabit Ethernet Ports | 2 |
| RS-232C Console | RJ-45 serial connection |
| Hard Drive | 500GB |
| Dimensions | <ul style="list-style-type: none">• Width: 424 mm (17 in.)• Depth: 457 mm (18 in.)• Height: 44 mm (1.7 in.)• EIA Rack or Standalone: 482 mm (19 in.) |
| Weight | 7.6 kg (16.8 lbs) |
| Operating Temperature | 0°C to 40°C (32°F to 104°F) |
| Relative Humidity | 5% to 95% non-condensing |
| Maximum Power Consumption | 168W |
| Maximum Heat Output | 573 BTU |
| Input Voltage | AC: 100-240V 47-63Hz |
| Certifications | <ul style="list-style-type: none">• Safety: EN 60950-1:2006, CB - IEC 60950-1, CCC, cTUVus/cULus• EMC: CE - EN 55022, EN 55024, EN 61000-3-2, EN 61000-3-3, IEC 61000 4-2 to 4-6, IEC 61000 4-8 & IEC 61000-4-11, FCC Part 15B Class A, ICES-003, VCCI, C-Tick• RoHS 6 |

APSSolute Vision VA (Virtual Appliance) Specifications

| Virtual Appliance Type | APSSolute Vision VA – Demo | APSSolute Vision VA – Full Size |
|------------------------|------------------------------|---------------------------------|
| Supported Hypervisor | VMware vSphere ESX4.1 or 5.1 | VMware vSphere ESX4.1 or 5.1 |
| Processor | 2 vCPUs | 4 vCPUs |
| Memory | 4GB | 8GB |
| Hard Drive | 50GB HD | 250GB HD |
| Networking | 3 vNICs | 3 vNICs |

About Radware

Radware, the global leader in integrated application delivery solutions, assures the complete availability, performance and security of business-critical applications for nearly 10,000 enterprises and carriers worldwide. With Radware's comprehensive and award-winning suite of products, companies can drive business productivity, improve profitability, and reduce IT operating and infrastructure costs by making their networks "business-smart."

Certainty Support

Radware offers technical support for all of its products through the Certainty Support Program. Each level of the Certainty Support Program consists of four elements: phone support, software updates, hardware maintenance, and on-site support. Radware also has dedicated engineering staff that can assist customers on a professional services basis for advanced project deployments.

Learn More

To learn more about Radware Alteon application delivery products please visit us at www.radwarealteon.com. For information regarding Radware's entire portfolio of application delivery and network security products for business-smart networking, please visit www.radware.com.